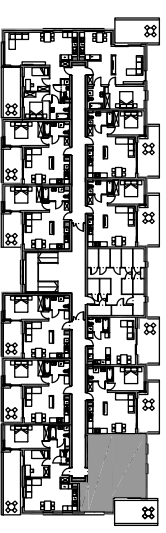
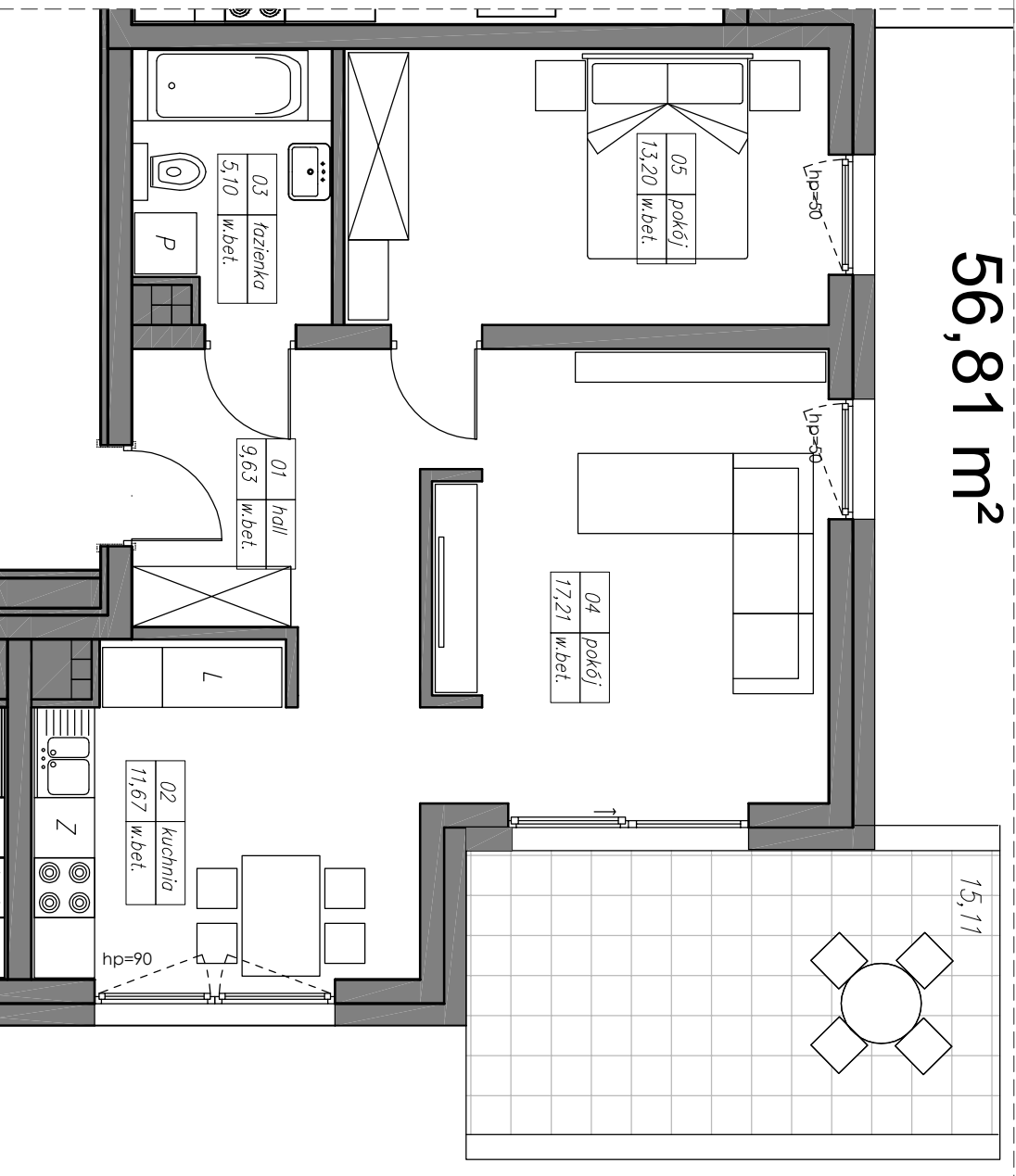




# M32 2P+K

## 56,81 m<sup>2</sup>



kondygnacja 3 - II piętro

mieszkanie nr 32

1	hall	9,63 m <sup>2</sup>
2	kuchnia	11,67 m <sup>2</sup>
3	łazienka	5,10 m <sup>2</sup>
4	pokój	17,21 m <sup>2</sup>
5	pokój	13,20 m <sup>2</sup>
razem		56,81 m <sup>2</sup>

balkon 15,11 m<sup>2</sup>