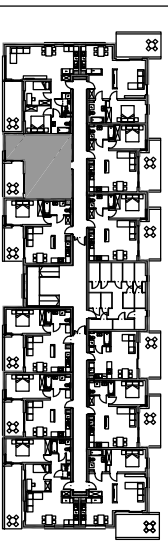
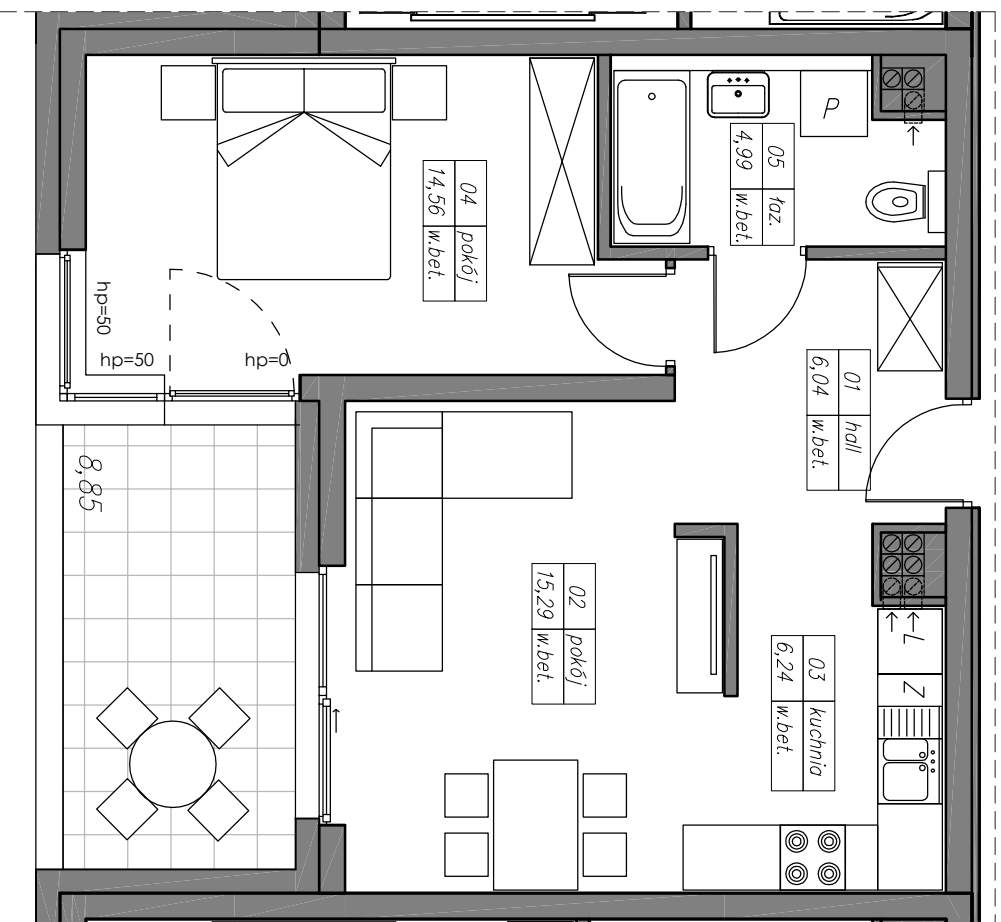


# M25. 2P+A

## 47,12 m<sup>2</sup>



kondygnacja 3 - II piętro

mieszkanie nr 25

1	hall	6,04 m <sup>2</sup>
2	pokój	15,29 m <sup>2</sup>
3	aneks kuchenny	6,24 m <sup>2</sup>
4	pokój	14,56 m <sup>2</sup>
5	łazienka	4,99 m <sup>2</sup>
razem		47,12 m <sup>2</sup>

balkon 8,85 m<sup>2</sup>