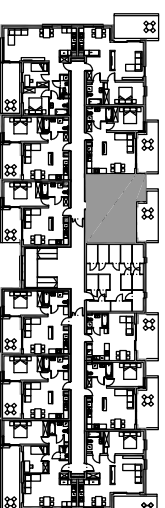
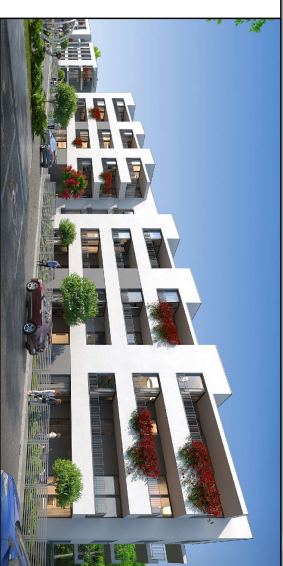


M17 2P+A

49,12 m²



kondygnacja 2 - I piętro

mieszkanie nr 17

| | | |
|-------|----------------|----------------------|
| 1 | hall | 5,84 m ² |
| 2 | aneks kuchenny | 7,31 m ² |
| 3 | pokój | 19,06 m ² |
| 4 | pokój | 11,70 m ² |
| 5 | łazienka | 5,21 m ² |
| razem | | 49,12 m ² |

balcon 13,62 m²