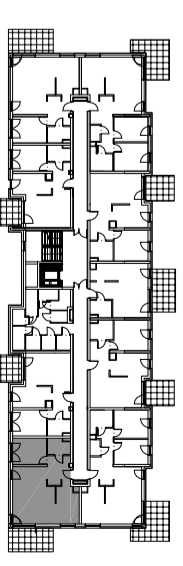
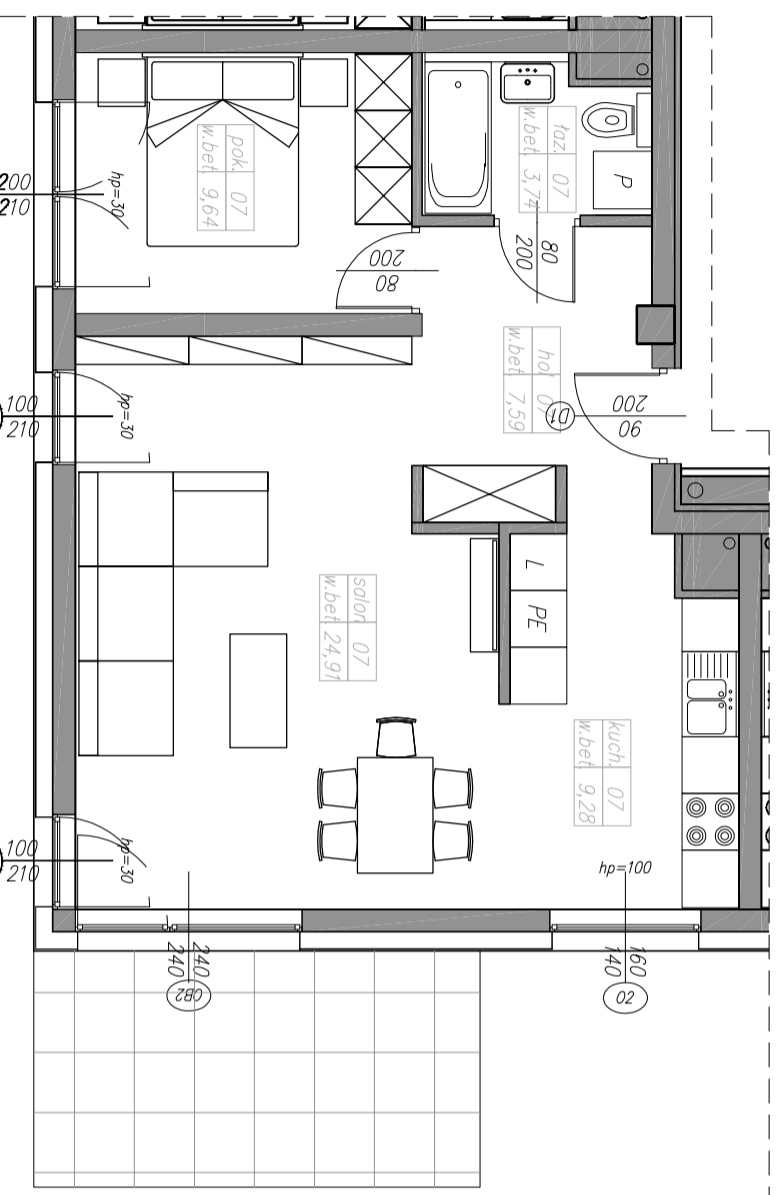
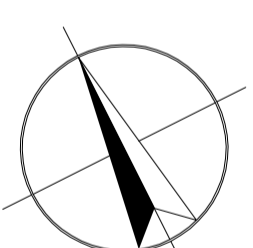


M53. 2P+K

55,16 m²



kondygnacja 3 - II piętro		
mieszkanie nr 53		
1	hall	7,59 m ²
2	salon	24,91 m ²
3	kuchnia	9,28 m ²
4	pokój	9,64 m ²
5	łazienka	3,74 m ²
razem		55,16 m ²

balkon 11,80 m²