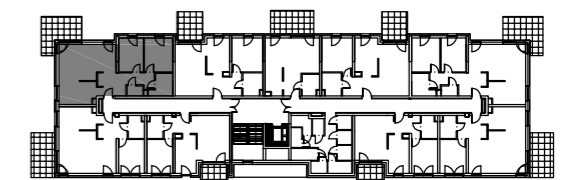
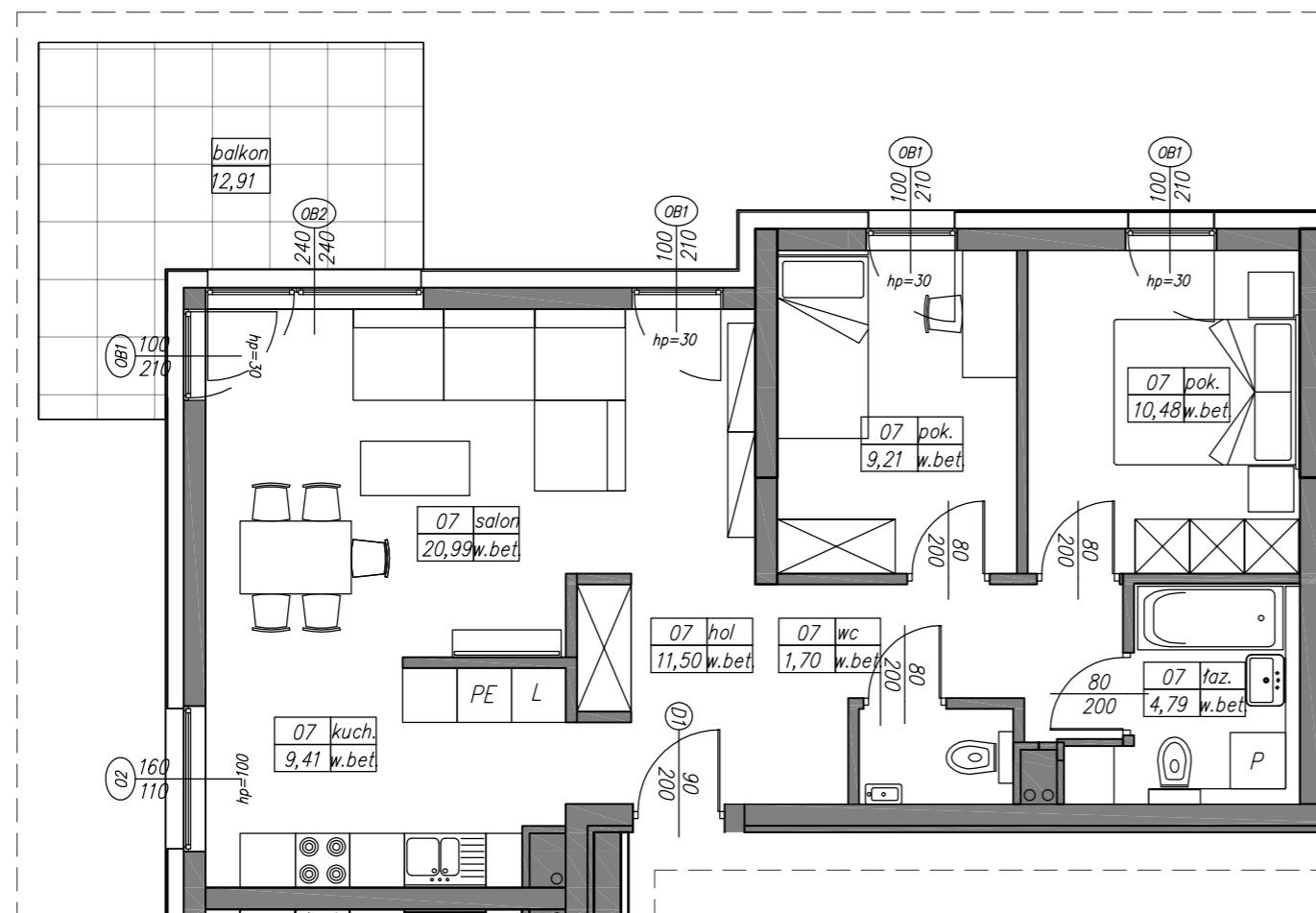
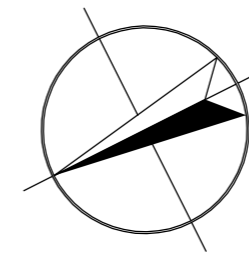


# M39. 3P+K

## 68,08 m<sup>2</sup>



### kondygnacja 2 - I piętro

#### mieszkanie nr 39

1	hall	11,50 m <sup>2</sup>
2	salon	20,99 m <sup>2</sup>
3	kuchnia	9,41 m <sup>2</sup>
4	pokój	9,21 m <sup>2</sup>
5	pokój	10,48 m <sup>2</sup>
6	łazienka	4,79 m <sup>2</sup>
7	wc	1,70 m <sup>2</sup>
<b>razem</b>		<b>68,08 m<sup>2</sup></b>

balkon 12,91 m<sup>2</sup>