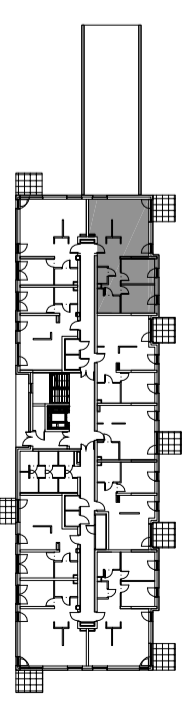
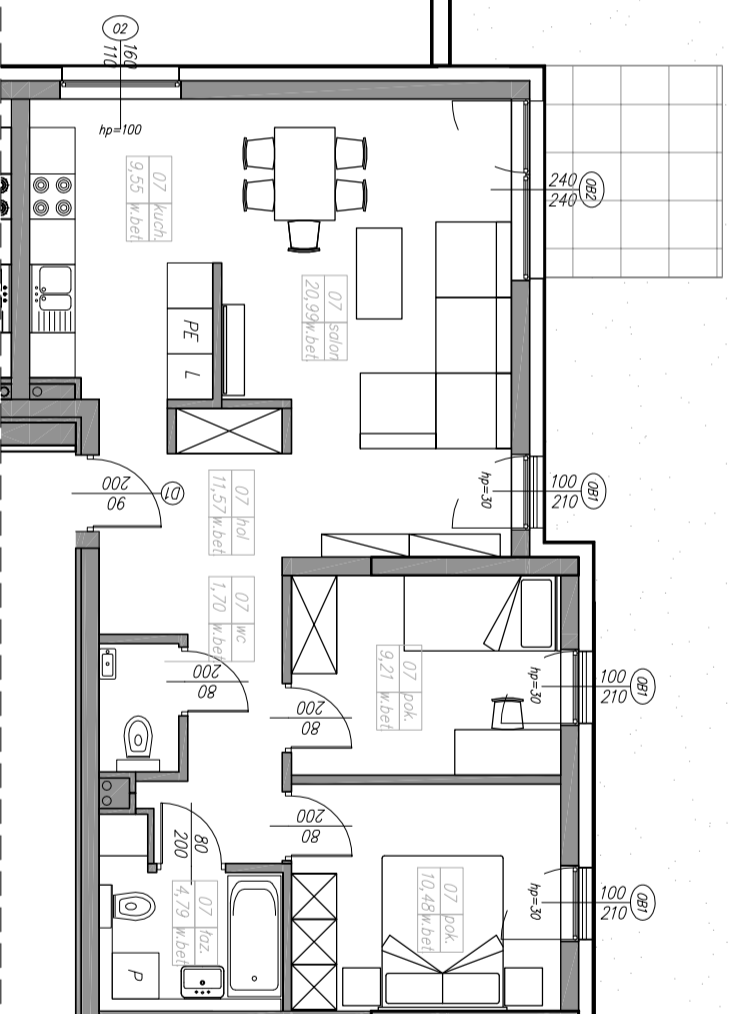
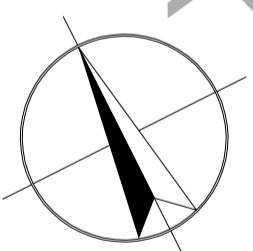


M30. 3P+K  
68,30 m<sup>2</sup>



**kondygnacja 1 - parter**

**mieszkanie nr 30**

1	hall	11,57 m <sup>2</sup>
2	salon	20,99 m <sup>2</sup>
3	kuchnia	9,55 m <sup>2</sup>
4	pokój	9,21 m <sup>2</sup>
5	pokój	10,48 m <sup>2</sup>
6	łazienka	4,79 m <sup>2</sup>
7	wc	1,70 m <sup>2</sup>
<b>razem</b>		<b>68,30 m<sup>2</sup></b>

ogród	153,76 m <sup>2</sup>
taras	6,58 m <sup>2</sup>